



OPPOSITE PAGE: View from the kitchen to the rear courtyard garden. Folding glazed doors, to the right, and the skylight, above, fill the space with natural light.
THIS PAGE: Looking from the informal dining area at the rear through the kitchen toward the front of the house, with the working spine to the left .



SAM CRAWFORD AND HEIKE REWITZER understand the benefits of collaboration. When asked to rework this Paddington terrace in Sydney, Sam, a sole practitioner, invited Heike to join him: “If you can talk through design issues with someone else, problems are often solved through the actual process of discussion,” says Sam.

The brief was fairly predictable – make room for another bedroom, reposition the bathroom, and let in more light. These are common requests, especially when the property is a small, narrow, inner-city Victorian terrace house, which hasn’t seen much change in its long life.

As is also common with many properties in older suburbs, the site was in a heritage precinct and subject to strict council controls. To maximise the benefit of the renovation, the architects and their builder-client used every opportunity to make the site work for them, extending to the boundary where they could, and fully utilising the permissible building envelope.

Inspired by the teachings of Louis Kahn, their principal strategy was to separate and articulate the “service” and the “served” spaces. The result is a working spine down one side of the house, comprising the kitchen, laundry, downstairs bathroom, storage and stairs. This “jewelry box”, as they describe it, serves the formal living spaces at the front of the house and a small open-plan, informal space at the rear.

Sam and Heike also extended the ground-floor structure to the full width of the property, for maximum space, and created a new connection with the rear garden through folding glazed doors across the back of the house. They then inserted a long strip skylight, where the second

storey now steps back from the side boundary, bringing sunlight and sky views inside.

What Sam describes as “an unfortunate sixties addition” was removed and a new garage, opening to a rear lane, was added. Taking advantage of a rise in levels between the front street and the rear lane, the architects created a walled courtyard at the level of the dwelling, with raised garden beds and steps up to the rear terrace and garage.

The house, itself, now has three levels. There is a new bathroom and two bedrooms on the second level, and lots of storage and an additional bedroom-cum-study in the attic where a dormer window overlooks the rear courtyard garden.

The architects employed a number of devices to enhance the sense of space. They deliberately limited the palette of colours and materials, choosing recycled Sydney blue gum flooring, jarrah benches and white or off-white surfaces. They extended the timber floors on the lower level out to the rear courtyard, again to promote a sense of generosity, and added strategically placed mirrors to trick the eye. With the internal stairs, the recessed kitchen work bench, and the television and stereo all built into one cohesive unit – the working spine – visual distractions were contained and the sense of space maximised.

Furniture, chosen in pale timbers, natural colours and white – from Anibou – continues the restrained theme while paintings, lamps and accessories provide points of visual interest and colour highlights.

Outside, bright blue render to the blockwork attracts the eye and gives a summery feel to both the entry and the garden courtyard. **SH**

ARCHITECT
Sam Crawford Architect
 in association with Heike
 Rewitzer Architecture and
 Interiors
 Level 5, 68-72 Wentworth Ave
 Surry Hills NSW 2010
 Tel: (02) 9280 3555
 Fax: (02) 9280 3556
 Email: samcrawford@
 ozemail.com.au

PRACTICE PROFILE
 Both Sam Crawford and Heike
 Rewitzer are sole practitioners
 who specialise in residential
 work.

PROJECT TEAM
 Sam Crawford, Heike Rewitzer

BUILDER
 Gunlake Constructions

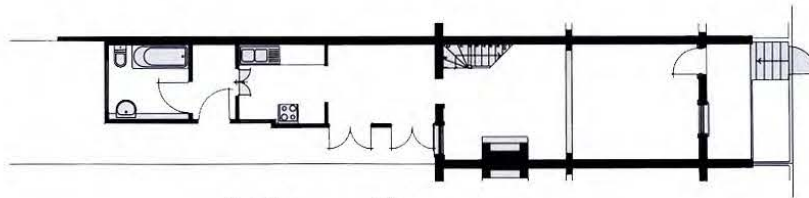
CONSULTANTS
 Engineer Burzulis Associates
 Landscaping client
 Interiors, lighting Sam
 Crawford and Heike Rewitzer

PRODUCTS
Roofing Colorbond Custom Orb
Walls External/internal –
 rendered brick, painted
Windows and doors Timber
 frames, stained; Madinoz
 hardware **Flooring** Timber
 structure; recycled Sydney blue
 gum, waxed **Lighting** iGuzzine
 recessed tv **Kitchen** Recycled
 jarrah benchtops, 2-pac
 polyurethane; Smeg appliances;
 Blancomix 2000C mixer
Bathroom Caroma Concorde
 400 round basin; Brodware Eko
 basin set tapware; Raymor
 Academy accessories,
 Hydrotherm towel rail **Furniture**
 Kitchen/breakfast area – Artek
 90a round table and Artek 66
 chairs, white laminate; Amat 3
 Jamaica aluminium barstools;
 dining – Artek 83 table birch
 timber, 2 x 45 Artek dining arm
 chairs; 4 x Artek 611 dining side
 chairs, natural coloured
 webbing; lounge – Caroline
 Casey Lepfrog coffee table, solid
 rock maple and float glass; Ism
 Objects Bud table lamp
Accessories Hackman ss fruit
 bowl; Orson & Blake candles
 and blankets; Norman & Quaine
 Flying Fox brand CD rack
Paintings Katherine Hattam
 (dining); Kim Wescott (lounge);
 Kate Briscoe (kitchen area), all
 from Australian Art Resources

TIME SCHEDULE
Design, documentation
 7 months
Construction 6 months

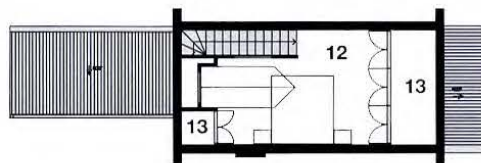
PROJECT COST
 \$250,000

PHOTOGRAPHY
 Eric Sterens

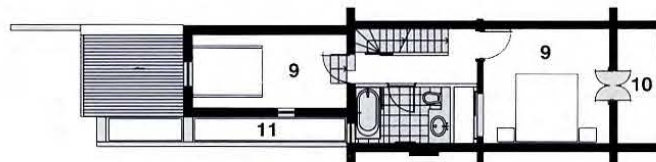


Existing ground floor

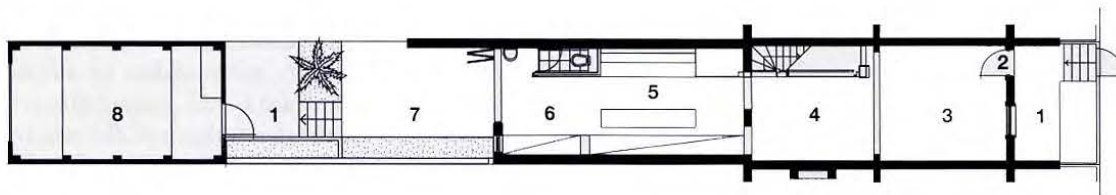
- 1 Terrace
- 2 Entry
- 3 Living room
- 4 Dining room
- 5 Kitchen
- 6 Informal living
- 7 Courtyard
- 8 Garage
- 9 Bedroom
- 10 Balcony
- 11 Skylight below
- 12 Bedroom/study
- 13 Storage



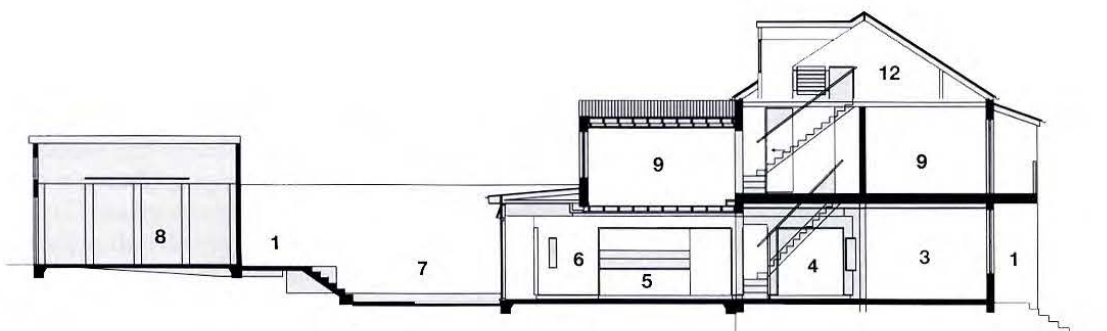
Third level (attic)



Second level



Ground level



Section