

## life's a beach house

**ANY BEACH HOUSE WORTH ITS SALT OUGHT TO BE BRIGHT, BREEZY, LIGHT, CASUAL AND FUNCTIONAL. THIS RENOVATION, BY SYDNEY ARCHITECTS SAM CRAWFORD AND EMILI FOX, IS ALL THAT AND MORE. WITH FUNKY FURNISHINGS AND ZESTY COLOUR ACCENTS THE CREATIVE DUO HAVE PUT THEIR OWN SPIN ON THE GENRE.**





**INTERIOR, EXTERIOR. THESE POLARITIES ARE DISSOLVED IN THE NEW EXTENSION WHEN**

**THIS IS A HOUSE DEDICATED** to the simple pleasures of open plan, open air living. It's a theme which runs right through from the front deck to the rear courtyard. Windows, louvres, sliding doors, glass folding doors – all have been thoughtfully positioned to catch the sun, the views and the sea breezes.

The brief to architects Sam Crawford and Emili Fox was to rework the layout and pep up the appearance of an existing 1950s timber beach house. The clients needed more living space, another bedroom and en suite, and they wanted the house to breathe: in its existing form, with glass on one side and hardly any windows opposite, the place functioned like a greenhouse – lots of light, but no air.

"We wanted to retain and enhance the light, open feel of the beach house," says Sam. "Of the original building fabric we kept the roof and roof structure, the wall framing and the floor joists. It would have been simpler, and possibly less expensive, to knock the thing down and start over. But there were too many good things about the box. The reason why the clients had fallen in love with the house was that it felt like a beach house – straightforward and unpretentious.

"We saw it as an opportunity to explore what we believe to be the essence of architecture – the manipulation and articulation of light, space and materials, colours and textures."

Under the original roof, Sam and Emili designed a new kitchen, dining and living area with direct access out to a northeast facing timber

deck. They installed new robes in the bedrooms, and added the main bedroom and en suite to the rear of the old house.

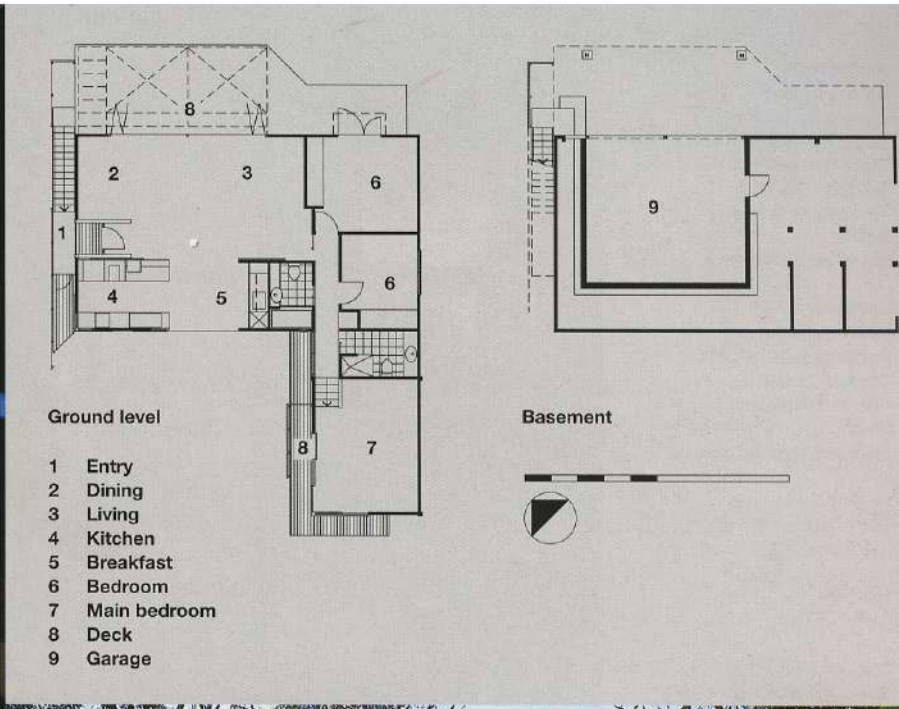
Using items of joinery and bright panels of colour as visual markers, they have clearly delineated the private and communal living quarters. Internal and external walls have been designed with versatility and ventilation in mind.

"And wherever possible, storage units have been stacked between rooms to maximise aural privacy," explains Sam. "Large sliding panels between the kitchen and the living/dining area encourage a flexible use of space, and the walls to the living areas can be completely opened up to create a continuous flow of space from the rear courtyard to the front balcony and beyond."

In terms of form, balance and articulation, the new bedroom extension has been designed to complement the existing house. Echoing the indoor-outdoor feel of the living section, this new area leads out to its own deck via timber-framed glass doors. Horizontal slot windows wrap around all four sides of the room, giving the ceiling the illusion of being suspended in space. At certain times of the day, the sun streams through these narrow windows and throws long bolts of light across the blue feature wall and pale timber cupboards. Under-ceiling slot windows work the same magic in the living area, framing views of the surrounding eucalypts.

In keeping with the low-fuss, casual style of the new extension, Sam





**OUTSIDE AND INSIDE ARE AS ONE.**

PREVIOUS PAGE, CLOCKWISE FROM TOP LEFT:  
 Detail of the kitchen, with the sliding room divider in the background; the dining area and breakfast nook, with the room divider in the middle; the deck, leading out from the living room; from the breakfast area, looking across to the living room.  
 THIS PAGE, ABOVE: The new bedroom and deck extension, looking across to the main part of the house on the left; the roof of the new extension.



## INTERIORS

### ARCHITECTS

**Sam Crawford**  
Level 5, Ballarat House  
68-72 Wentworth Avenue  
Surry Hills NSW 2010  
Tel: (02) 9280 3555  
Fax: (02) 9280 3556  
Email:  
samcrawford@ozemail.com.au

### Emili Fox

53 Windsor Street  
Paddington NSW 2021  
Tel: (02) 9328 0760  
Fax: (02) 9328 0205  
Email:  
emilifox@bigpond.com.au

### PRACTICE PROFILE

Two separate practices,  
specialising in residential projects

### BUILDER

Peter McTaggart

### CONSULTANTS

**Structural engineer** Tihanyi  
Consulting Engineers  
**Geotech engineer** Jack  
Hodgson Consultants  
**Landscaping** Glasgot Landscaping  
**Interiors, lighting** Architects

### PRODUCTS

**Roofing** BHP Colorbond Custom  
Orb, and Mini Orb awning;  
**External walls** Main house –  
roughsawn vertical t & g western  
red cedar boards with Cabot's  
'Ranchhouse' stain; rear addition  
– CHH Texture 2000 plywood  
with 'Ranchhouse' stain **Internal  
walls** Plasterboard, Dulux 'White  
Opal', 'Magenta', 'Lime', 'Royal  
Blue' **Windows** Windoor wrc  
frames, Feast Watson DVD finish  
**Doors** Windoor, Legga Pacific  
hardware **Flooring** 75 mm t & g  
cypress **Lighting** External –  
Lumescopie Pagoda lights;  
internal – 50W recessed low  
voltage, Studio Italia Extra  
W.150W Linear Halogen lamp  
**Kitchen** Blanco sink & taps;  
Smeg oven & cooktop;  
**Heating/cooling** James Hardie  
wrc Breezeway and glass Naco  
louvers **External elements**  
Sandstone paving; blackbutt  
decking; Canadian yellow cedar  
pergola **Furniture** Norman &  
Quaine couches, lounge chairs,  
coffee table, ottoman, lights;  
Anibou dining table, chairs,  
kitchen table, side tables, stool;  
Dinosaur Design tableware;  
Cowhide chaise designed by  
Sam Crawford **Other** Hoop pine  
joinery by Claremont Joinery

### TIME SCHEDULE

**Design** 2 years  
**Construction** six months

### COST

\$270,000

PHOTOGRAPHY  
Brett Boardman



and Emili used simple interior finishes with occasional hot spots of zesty colour to revamp the rest of the house. In the main living area, cypress flooring provides a rustic contrast to the smoothly-textured hoop pine joinery used for the kitchen cabinets and general purpose storage units.

The privacy screens can be rolled across the space to effectively cordon the kitchen and breakfast area off from the dining area, or create partial divisions, as desired. These screens have been painted a pale lime green, a cool summery colour that works well in the predominantly neutral interior. Bifold doors open up this whole area to the deck, where the shift from polished timber boards to weathered hardwood marks the transition from indoors to outdoors. When the sun hits the timber pergola above the deck, it creates a dappled effect through the living area.

Funky retro furnishings in muted pastel tones and contemporary accessories complete the laid-back setting. Day or evening, this is a house for lovers of sun and sea air, for people who enjoy a living environment that dissolves the boundaries between indoors and outdoors.

**THIS PAGE, CLOCKWISE FROM TOP LEFT:** From the deck, looking into the breakfast area; stairs leading from the garage to the main deck; the facade; from the deck, through to the living and dining area.