

01 The material composition of plywood, concrete and stainless steel reflects the owners' desire for a practical kitchen.



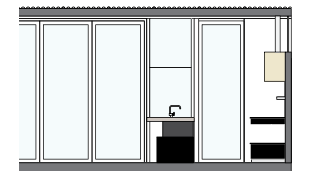
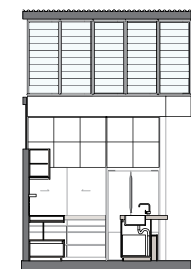
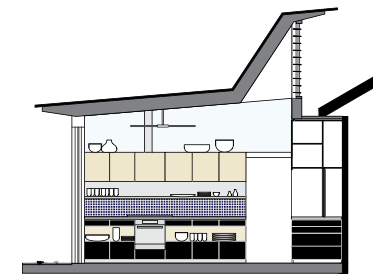
PROJECT

LIGHT & BREEZY

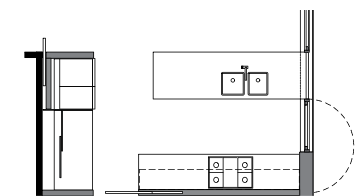
• SAM CRAWFORD ARCHITECTS •

This beachside Sydney home is bookended by inspired additions to the north and south, articulated by a raked ceiling, a practical design and a warm and inviting materials palette.

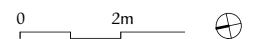
Words by [Ted Quinton](#)
Photography by [Brett Boardman](#)



Kitchen elevations 1:150



Kitchen plan 1:150





02 A strip of north-facing windows just below a raked ceiling draws in natural light and provides ventilation.



03 A polished concrete benchtop appears to float above black formply joinery and cupboard storage space.



04 The kitchen opens outward to greet the heritage sandstone wall that frames the rear garden courtyard.

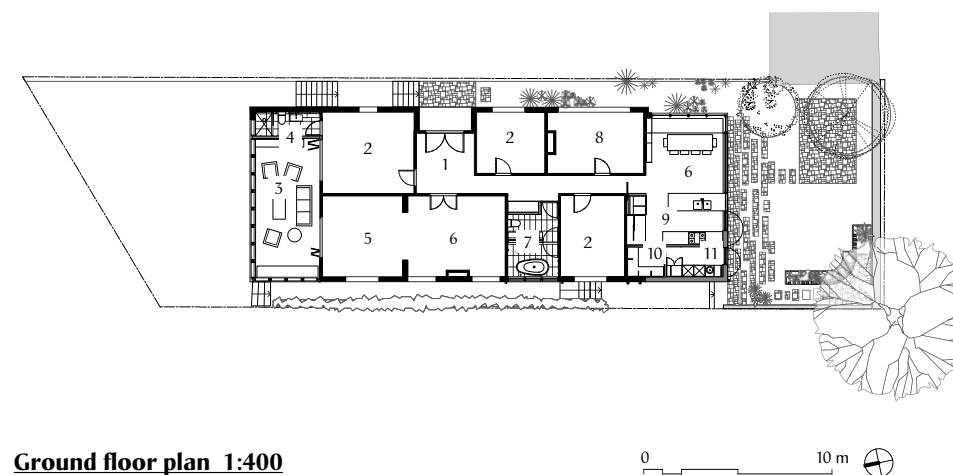
The passing across a threshold always creates a sense of expectation and excitement in a house, and so it is when crossing this subtle yet clear demarcation in the Bronte house by Sam Crawford. The new kitchen forms part of a much larger space at the rear of the house, which includes an eating area and ancillary rooms, but as the centrepiece the kitchen claims its place in a direct and simple manner. The composition of plywood, concrete and stainless steel reflects the owners' desire to have a practical kitchen, but one that is in keeping with the informal nature of that part of the house.

A strong feature of the space is the backdrop formed by an existing rear heritage sandstone wall framing the rear garden courtyard. The kitchen opens outwards to greet the wall, and its position and the warmth of its materials encourage people to flow out towards it. The floating polished concrete benchtop is the focal point of the kitchen; below it, black formply shelves and cupboards have been designed with various storage capacities. The upper-level cupboards are of natural plywood, so tonally the kitchen lightens

from bottom to top, a gesture in keeping with the light coming in through the large strip of high north-facing windows above. The rear stainless steel benchtop adds a slightly industrial feel to the kitchen, and is comfortable exhibiting various appliances and utensils. On a side wall, sliding orange doors – a splash of colour in an otherwise controlled and subdued, yet warm and inviting palette – hide the bits and pieces used in daily life.

The orange of the kitchen doors reappears in the main bathroom as a slotted shelf within the shower and bath section of the room. Designed again for practicality, the bathroom is split in two, with the shower-bath section flanked by a wall of glass louvres on one side and a black satin-tiled wall on the other; the tiled wall divides this section from the toilet and basin area. A highlight window above borrows light from the windows beyond, spilling it into the other half of the room. The vanity benchtop is in a marble selected to echo the windowsill, which is made from marble salvaged from the old house.

This pleasing, workable project shows that repetition is a virtue and economy an ally when handled with subtlety and imagination. κ+Β



Ground floor plan 1:400

- 1 Entry
- 2 Bedroom
- 3 Sunroom
- 4 Ensuite
- 5 Dining
- 6 Living
- 7 Bathroom
- 8 Study
- 9 Kitchen
- 10 Pantry
- 11 Laundry

05



05 The main bathroom is split in two, with shower and bath separated from basin and toilet by a black satin-tiled wall.

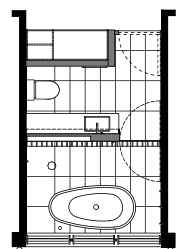
06



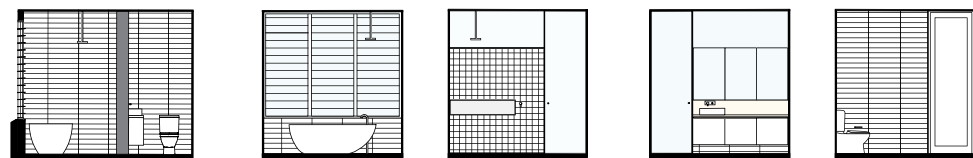
06 A vibrant orange shelf is a point of drama among the dark tiles of the monochromatic family bathroom.

07 A golden plywood ceiling angles down as it enters the ensuite, adding texture and directing the eye to the glass louvres.

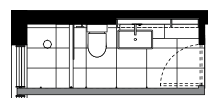
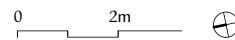
07



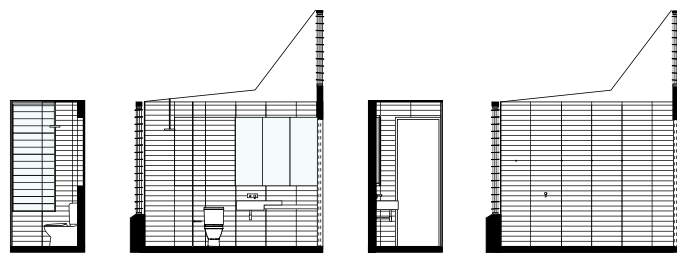
Bathroom plan 1:150



Bathroom elevations 1:150



Ensuite plan 1:150



Ensuite elevations 1:150

Architect

Sam Crawford Architects
L5 68 Wentworth Avenue
Surry Hills NSW 2010
+61 2 9280 3555
studio@
samcrawfordarchitects.com.au
www.samcrawfordarchitects.com.au

Practice profile

A design-driven practice that works primarily on residential and public projects, as well as heritage conservation and furniture design.

Project team

Sam Crawford, Karen Erdos, Wendy James

Builder

Calandra Constructions (stage one); Buildability Constructions (stage two)

Consultants

Joinery: Designed by Sam Crawford Architects and built by Mark Watson Joinery

Lighting: Sam Crawford Architects with Lighting Partners Australia

Hydraulic engineer: O'Hearn Consulting

Structural engineers: Northrop Engineers

Quantity surveyor: QS Plus

Landscape architect: Melissa Wilson Landscape Architects

Kitchen products

Internal walls: Painted Dulux Professional Enviro2 acrylic low-sheen in 'Berkshire White'

Flooring: Polished concrete
Joinery: Precast concrete benchtops in 'Castle' from 2 Barrows Polished Concrete; stainless steel benchtop; formply cupboards in black from Mister Ply and Wood; Alpine Premium MDF cupboards with 2-pac Porter's Paints finish in 'Gusto'; plywood cupboards in Sikkens Cetol TS clear matt finish

Lighting: Track lights, spotlights and LED strip lights from Lighting Partners Australia; Slimlite fluorescent lights behind cabinets from Sylvania Lighting Australasia
Sinks and tapware: Gessi Oxygene mixer; Abey sinks

Appliances: Ilve built-in oven and stove top with flushline hob

Doors and windows: Casement windows, and Madinoz Architectural Hardware internal doors and handles from Style Finish

Bathroom products

Internal walls: Arabian matt rectified white tiles and Badarra matt tiles in 'Midnight' from Onsite

Flooring: Honed Vara basalt to ensuite, and Char tiles to other bathrooms, both from Onsite

Joinery: Alpine Premium MDF and particleboard melamine cabinets with Viridian Decor mirrors to all bathrooms; marble slab shelf to ensuite; recessed shelf box in Porter's Paints

'Aniseed,' Eco-Core birch multiply cupboard with 2-pac Dulux finish, and marble slab vanity benchtop and vertical splashback, all in main bathroom

Lighting: Slimlite fluorescent lighting behind cabinets from Sylvania Lighting Australasia; Audrey Tilt recessed downlights from Lighting Partners Australia

Tapware and fittings: Lexi Phoenix shower mixer; Grohe Rainshower Cosmopolitan shower head and Brewers Round ceiling arm, both from Cass Brothers; Madinoz Architectural Hardware towel rail

Sanitaryware: Parisi Envy wall-faced toilet suite, Flow basin and Lexi Phoenix wall basin set to all bathrooms; Parisi Isola bath, Lexi Phoenix mixer, Vivid range floor-mounted bath outlet from Reece

Doors and windows: Casement windows and Madinoz Architectural Hardware internal doors and handles from Style Finish; Aneeta Sashless Windows windows