

A CREATIVE, CALCULATED DIVISION OF SPACE IS THE HIGHLIGHT OF THIS RESIDENTIAL HOUSE FOR SIX IN AUSTRALIA

photography
BRETT BOARDMAN

HARBOUR HOUSE

1/
The central stair void with clerestory window over brings light and winter sunlight into the heart of the house (pool in rear of view).

2/
The kitchen is the centre of activity in the house – all living spaces are connected to it.



SAM CRAWFORD'S clients wanted a cool, sun-drenched house for a family of six with privacy, a lawn area and a pool for the kids. They also wanted plenty of storage, and for the house to have a passive solar design that includes rainwater storage. What came out from the drawing block was a three dimensional diagram of the client's brief, in keeping with their expression and vision of what constitutes a family home.

The relatively narrow, west-facing site, overlooking Sydney Harbour presented common challenges, uniquely configured. The brief required maximising the permissible built to unbuilt ratio, thus the creative use of spaces and the blurring of indoors and outdoors. The neighbouring dwellings, none being architectural masterpieces, were in very close proximity, compromising privacy, light and views. A natural rock-shelf split the site in two. Council codes, if taken literally, provided an awkward and relatively narrow building envelope.

The basement holds car parking, plant, storage, a cellar and water tanks.

The ground floor is a double-ended living space, capturing both the winter sun and stunning harbour and city skyline views. The rear, informal zone, opens to a lawn and a pool cut into the existing sandstone ledge. The front, more formal zone, opens to a private deck and expansive views of Sydney Harbour, the Sydney Opera House and the city skyline. The kitchen – located at the centre of the living level – is the hub of the house. The living spaces, study, entry and main stair all flow from the central kitchen.

The first floor provides five bedrooms, with the main opening up to a protected, west facing, entertaining deck that offers more encompassing views, and an extended sunset viewing platform.

The central stair void – with clerestory over – carries the winter sun to the heart of both the first and ground floors.

The material palette is limited to rendered and set white walls and clear finished Australian hardwood timbers, inside and out, unifying an otherwise unconventional form and layout. ▽

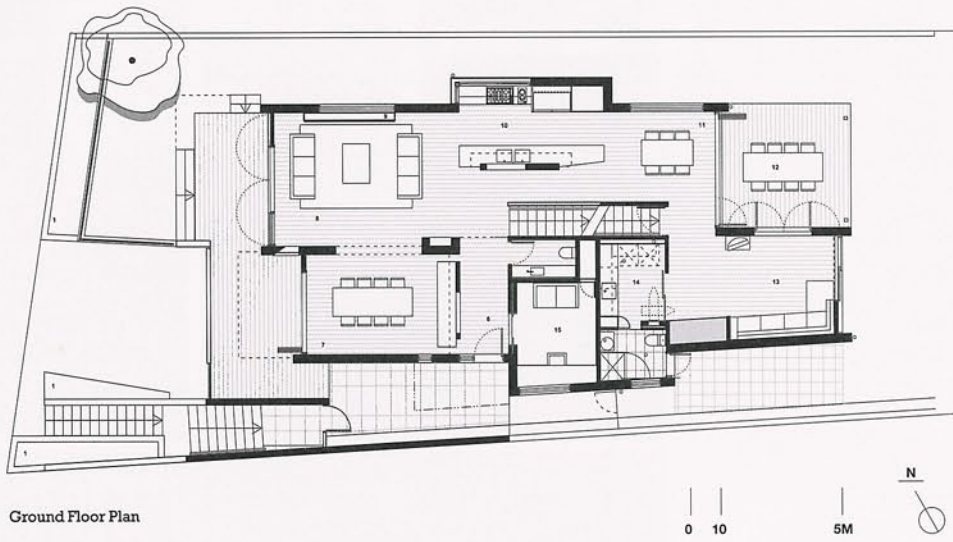


3 / View across dining table to living room. Each space is defined yet open to the next

4 / View of eastern, rear elevation, lawn and rear deck, through to informal living rooms and kitchen.

5 / Daytime view of the western elevation. The formal living room opens to a small deck and lawn, with views west over the harbour.

- + PROJECT
Harbour House 1
- + LOCATION
Sydney, Australia
- + SITE AREA
530 sqm
- + HOUSE AREA
290 sqm + basement parking
- + PROJECT TEAM
Sam Crawford, Cressida Beale, Jane Silcock, Jonathan Moore, John Bralic
- + LANDSCAPE DESIGN
360 degrees
- + STRUCTURAL ENGINEER
O'Hearn & Assoc
- + GEOTECHNICAL ENGINEER
Asset Geotec
- + STORMWATER
Bonnarcci Rickard
- + HERITAGE CONSULTANT
John Oultram
- + NATHERS
Andrew Spalle & Assoc
- + BUILDER
Gunlake
- + COUNCIL
Woolahra Municipal Council
- + PHOTOGRAPHY
Brett Boardman



- Key
- 1 Planters
 - 2 Air Conditioning Plant Room
 - 3 Garage
 - 4 Detention Tank
 - 5 Cellar
 - 6 Entry Hall
 - 7 Dining Room
 - 8 Living Room
 - 9 Fireplace
 - 10 Kitchen
 - 11 Breakfast Room
 - 12 Rear Terrace
 - 13 Family Room
 - 14 Laundry
 - 15 Study
 - 16 Deck
 - 17 Master Bedroom
 - 18 Bedroom

