





# north bondi amenities

SAM CRAWFORD ARCHITECTS

**Project:** North Bondi Amenities

**Location:** North Bondi, NSW

**Function:** Public amenities building

**In Collaboration with:**  
Lymesmith Polychromy

**Builder:** Grindley Interiors

**Structural Engineer:** Cantilever

**Photography:** Brett Boardman

**BACKGROUND** The North Bondi Amenities, designed in collaboration with Lymesmith Polychromy, is one of three coastal amenities buildings Sam Crawford Architects has completed for Waverley Council. Located on the northern end of Bondi Beach, adjacent the North Bondi Surf Life Saving Club, it replaces a toilet block on the same site. The design brief included: doubling the number of toilets, adding accessible toilets, change rooms and outdoor showers, and retaining the physical connection to the existing Sydney Water Pump house, whilst minimising the bulk and footprint of the building.

**DESIGN** The building form is modest in scale. A modulated timber skin provides a softness and tactile engagement unusual in such perfunctory building types. The timber cladding unifies the new amenities building with the conjoined mass of the existing Sydney Water Pump house. The charred finish to the pump station cladding creates a visually recessive but texturally rich variation to the building form. A green roof, covered in succulents and grasses - referencing the coastal clifftops - creates a fifth façade for occupants of overlooking apartment buildings.

The most public of public buildings, in the most public of public spaces, North Bondi Amenities is orientated to the ocean and beach promenade - drawing people into the building. Skylights admit natural light and a slotted skin draws fresh air through the internal spaces. Replacing the worn out 1980's amenities building, the new building provides increased capacity, and upgraded facilities to cater to all beachgoers.

Generous awnings and integrated bench seats provide shelter to the Campbell Parade bus stop, activating the street façade and occupying the building edges. The communal concrete wash trough and outdoor showers extend the building into the public realm facilitating the public life of the building and the beach.

**MATERIAL** The building's colour scheme and materiality is the result of collaboration with Sonia van de Haar of Lymesmith Polychromy. Inspired to explore the public nature of the building, Sonia utilized the Australian Standard colour palette, introducing institutional paint colours to create a datum line in the building that speaks to the assertive presence of the horizon line and plays with a sense of proportion at the human scale. This 'horizon line' runs right through the building from exterior to interior.

The external cladding utilises salvaged hardwood timber serendipitously discovered during the demolition of a Council warehouse, unifying the new amenities building with the existing Sydney Water Pump house. The pumping station battens are charred, which seals and preserves the timber from further weathering.

All materials were chosen for robustness, durability, and amenity. Hardwearing materials such as terrazzo and concrete are used to ensure the building withstands the harsh coastal elements.

The external  
cladding utilises  
salvaged  
hardwood timber  
serendipitously  
discovered during  
the demolition of a  
Council warehouse





**Title page** Communal wash-basins and sculptural roof form address the beach promenade to draw in users.

**Left** The amenities building addresses the beach-front promenade, providing showers and change rooms for beach-goers.

**Right** Original amenities building and Sydney Water Pump house prior to demolition.

**Below** The building provides seating and shelter to the street-side bus stop.









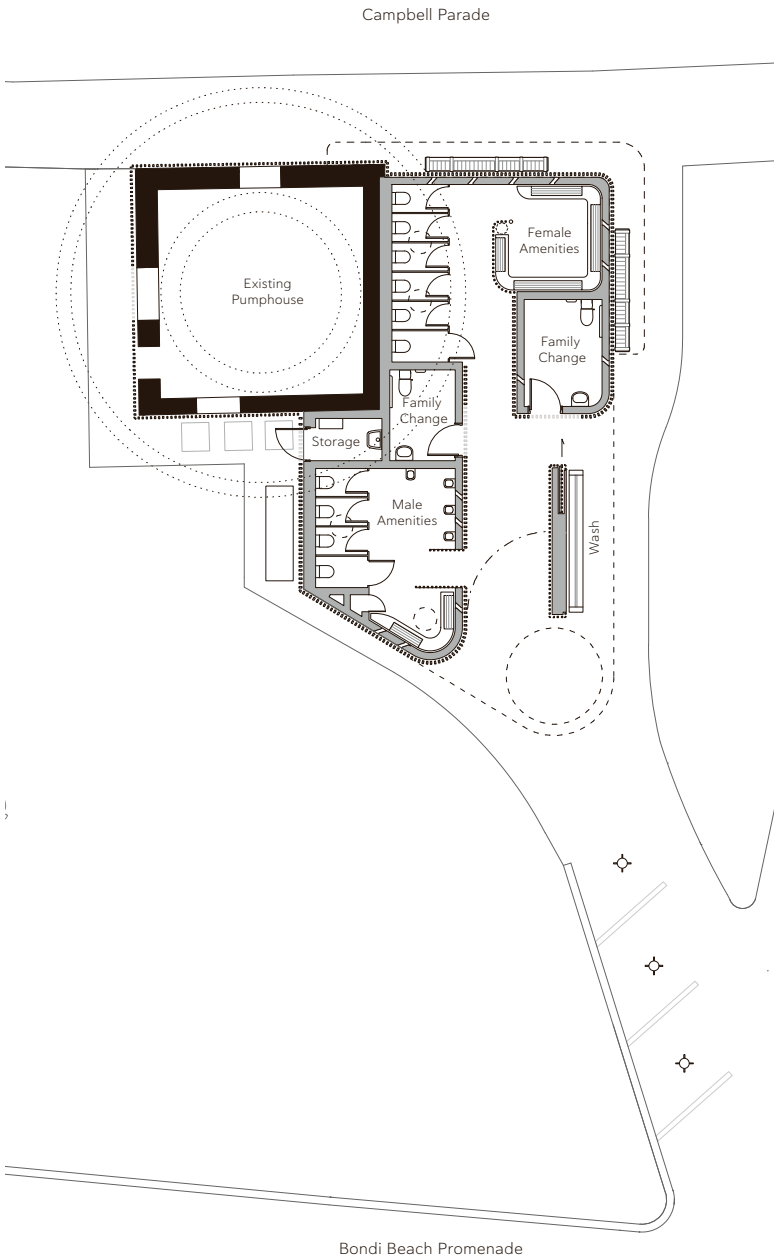


**Far left** Internal spaces are made from high-quality, durable materials.

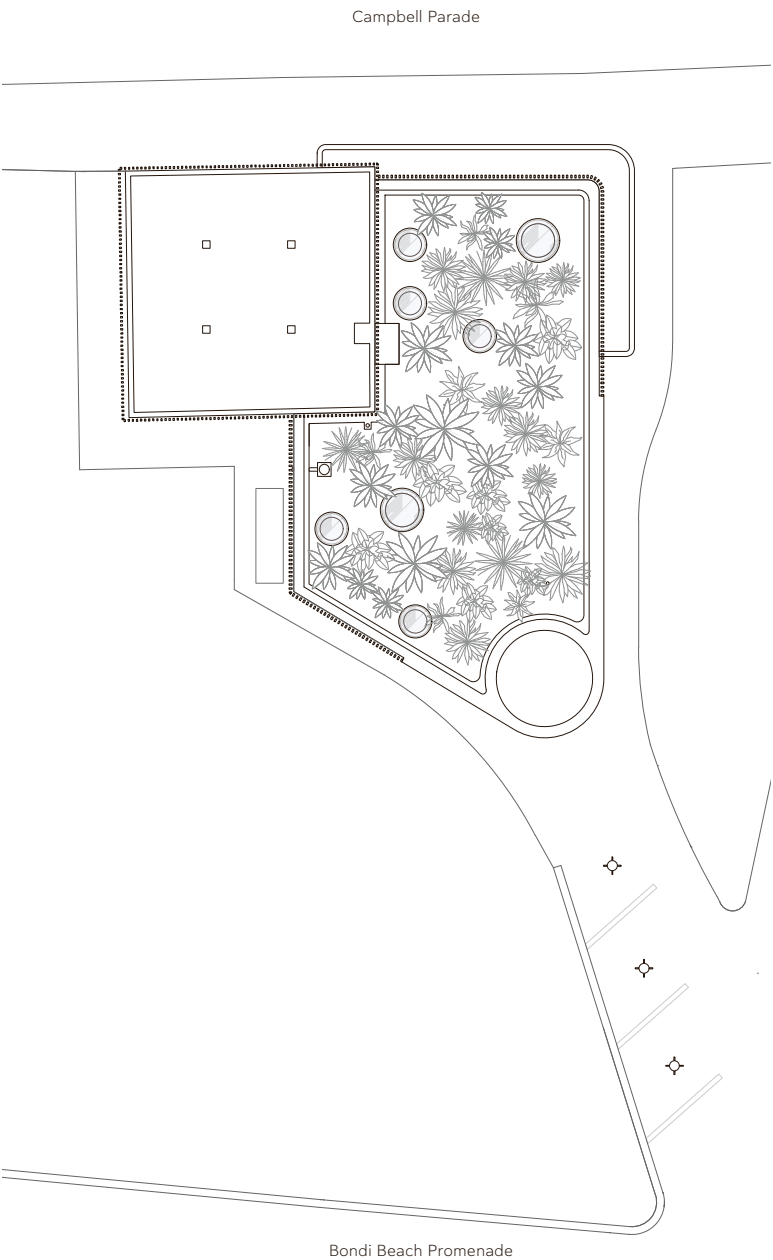
**Left** Internal spaces are naturally lit via sky-lights and naturally ventilated through the building's slotted skin.

**Above** The green roof softens the building to the adjacent apartment buildings.

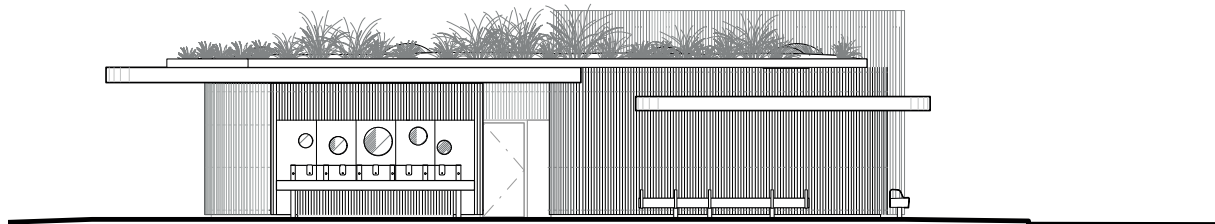
The design brief included... retaining the physical connection to the existing Sydney Water Pump house, whilst minimising the bulk and footprint of the building



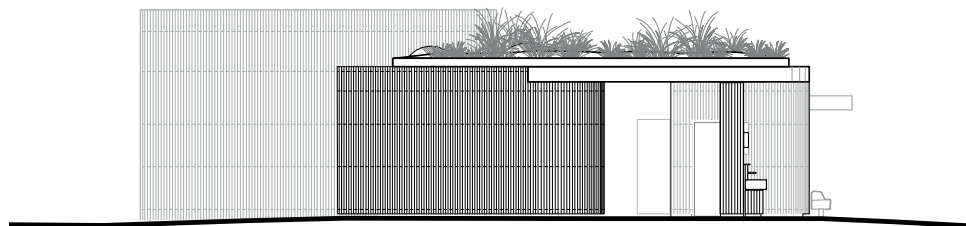
GROUND FLOOR PLAN



ROOF PLAN



EAST ELEVATION



SOUTH ELEVATION