

TREE CHANGE

Thanks to its *BEAUTIFUL* established gardens and *heritage character*, this *RENOVATED* home sits quietly and unassuming in the suburban streetscape.

STORY Stephanie Hope | PHOTOGRAPHY Tom Ferguson

TERRACE A new terrace was built on the site of the previous one. Cotto D'Este 'London' pavers in Grey Silk. Outdoor setting, Space. The home's exterior is finished in Barestone panels from Cemintel, and spotted gum cladding from Sculptform.



THE PALETTE

Resene SpaceCote in Quarter Blanc (interior)

Dulux White Polar Quarter (interior)

Resene Double Stonehenge (exterior)

"A bedroom up in the trees." This delightful request was top of the wish list for the single female owner of this interwar bungalow on Sydney's leafy North Shore when she engaged the team at Sam Crawford Architects to resolve and extend her beloved home. Having lived here for nearly 40 years, she had a close connection with the property, but wasn't blind to its shortcomings.

"The house was well-maintained but had suffered some poorly built renovations that had been added piecemeal over time," says the project architect Jarad Grice. "The owner's wish was for more light and storage; to expand the living areas, increase the access to winter sun and create an upstairs bedroom with an ensuite bathroom and plenty of wardrobe space."

The bungalow is set within a lush, established garden and is located in a heritage conservation area, so much care was taken to preserve the original frontage and make the treasured garden a focal point.

"The house was carefully rebuilt within its existing footprint, although the rear is entirely new," says Jarad. "A new outdoor terrace sits in almost the exact location of the original terrace to ensure the garden was protected and maintained during the build."

Structurally, the disparate internal ceiling heights and floor levels have all been synchronised, a relatively simple change that opens up the home substantially. French oak flooring and joinery throughout unifies old and new spaces, while a large central void and skylight draws light into the kitchen and visually connects the downstairs living areas with the new upper floor bedroom suite, as well as the stunning gardens.

The kitchen is a particular triumph for Jarad. "It has warmth, comfort and human scale," he says. A four-metre bench along the southern wall provides ample space for

LIVING The newly expanded living space leads out to the terrace and the owner's beloved garden. B&B Italia 'Charles' sofa, and Living Divani 'Box' chairs, Space. Terrazzo coffee table, owner's existing. Custom blinds, Simple Studio. Photographic print of Jørn Utzon by Jozef Vissel. The floating stairs are in the same French oak as the floors. Custom cabinet by Sam Crawford, Square Peg Woodworks.

THE KITCHEN IS A PARTICULAR TRIUMPH. "IT HAS WARMTH, COMFORT AND HUMAN SCALE." *Jarad Grice*



KITCHEN/DINING Island bench in Super White marble, Nefiko Marble. French oak veneer cabinetry, Square Peg Woodworks. Franke tap in Brushed Chrome. Magnet 'Evo' track lighting, Euro luce. Artwork by Joanne Duffy. Dining table, owner's existing. Chairs, B&B Italia 'Papilio', Space, Wowowa 'Rosella' pendants, Rakumba.



food preparation, while the void illuminates the central stone island bench plinth from above - "a bit like an altar", says Jared - with downlights hidden within to light the area at night. The island acts as a gathering space between the living and dining areas. "It's a great place for drinks and canapes when the owner is hosting," says Jarad.

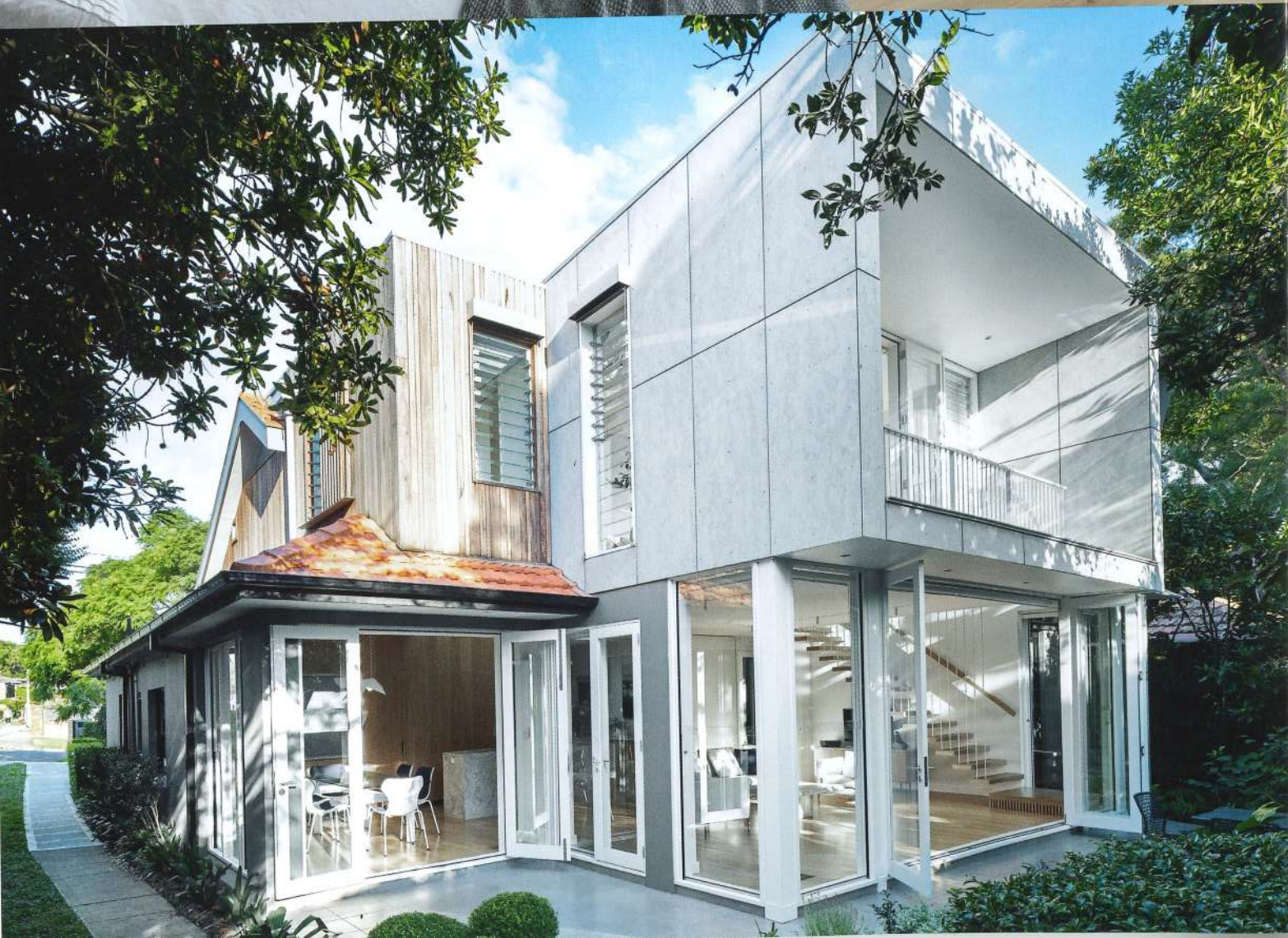
The magic continues upstairs. As requested, the serene master suite enjoys views over the trees not just from the bed, but also from the private balcony, the small study and the bathtub in the ensuite. In addition, what Jarad describes as "the largest wardrobe our office has ever designed" wraps around the central void and stores the owner's substantial couture clothing collection. The ensuite has been designed with soft curves in the walls, ceiling and the divide between the shower and vanity, which creates a lovely, calming sense of enclosure.

"Previously, the space felt claustrophobic, even though it was quite large," says Jarad. "The use of curves and angles in this new design softens the way the light falls on the surfaces and helps bounce light down through the void. We've designed the space so you can look out through the void over the stairs and through the external window and survey the garden while you shower."

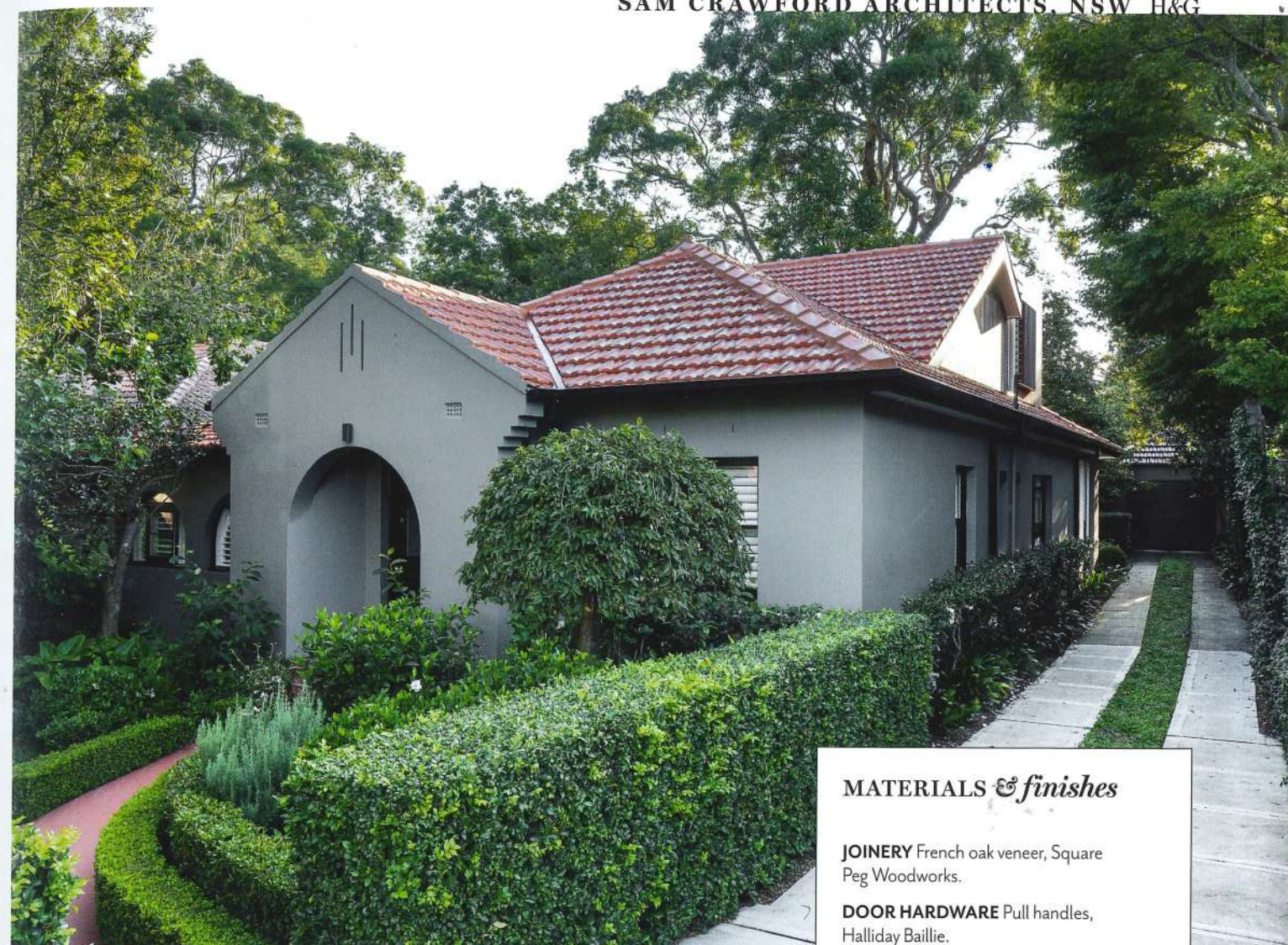


ENSUITE Subtle curves add softness to this bathroom. Inax 'Yohen' border wall tiles, Artedomus. Momentti terrazzo floor tiles, Onsite Supply+Design. Apaiser 'Haven' bathtub. Basin, Rogerseller. Icon tapware, Astra Walker. Flos 'Glo-Ball' lights, Euroluce. **MAIN BEDROOM** Curtains, Simple Studio. Track lighting, Euroluce. Serge Mouille 'Pivotant Courbe' wall light, Cult. Artworks by Raelene Kerinauia. **STUDY** Adjacent to the main bedroom the study overlooks the garden. Aneeta 'Altair' louver sashless windows, Breezway.

MAIN BEDROOM The balcony is set back to provide privacy. Serge Mouille 'Pivotant Courbe' wall lamp, Cult. Timber dresser, Poliform. **REAR EXTERIOR** A variety of new materials on the extension include Barestone natural finished panels from Cemintel and spotted-gum cladding from Sculptform. **FRONT FACADE** Due to heritage constraints the front remains unchanged other than new paintwork in Resene Double Stonehenge. Monier 'Marseille' tiles in Sunset. Klip Lok roofing in Colorbond Shale Grey, Lysaght. For Where to Buy, see p4.



SAM CRAWFORD ARCHITECTS. NSW H&G



MATERIALS & finishes

JOINERY French oak veneer, Square Peg Woodworks.

DOOR HARDWARE Pull handles, Halliday Baillie.

BENCHTOPS Stone benches in Super White, Nefiko Marble.

TILES Inax 'Yohen' border wall tiles, Artedomus (ensuite). Kho Liang le Collection wall tiles, Mosa (bathroom). Momentti terrazzo floor tiles, Onsite Supply+Design.

FLOORING French oak floorboards, Austral Flooring.

APPLIANCES Miele and Qasair (rangehood).

TAPWARE Franke in Brushed Chrome (kitchen). Icon tapware and shower accessories in Brushed Chrome, Astra Walker (bathrooms).

SINKS Undermount basins (bathrooms), Rogerseller.

COLOUR SCHEME Resene SpaceCote in Quarter Blanc and Dulux White Polar Quarter (interior walls). Resene Double Stonehenge (exterior).

LIGHTING Flos 'Glo-Ball' lights in various sizes (bathrooms) and 'Magnet Evo' track lighting (living areas and main bedroom), Euroluce. Wowowa 'Rosella' pendants, Rakumba. Serge Mouille 'Pivotant Courbe' wall light, Cult.

With its newly acquired abundance of natural light and the gardens visually accessible from every corner, the home provides its owner with a tranquil sanctuary from the nearby hustle and bustle. "She says she feels very at peace here," says Jarad. "We try to make our designs very personal, and I think that shows in her love of the finished product."

DESCRIBE THE BRIEF AND THE RESULT YOU WERE TRYING TO ACHIEVE WITH THIS RENOVATION? To open up the house to more light and add an upstairs bedroom while maintaining the home's familiar feel and established gardens.

WHAT WAS THE DESIGN SOLUTION? Install a central void to bring in more light and connect the upstairs and downstairs spaces. Eliminate the multiple floor and ceiling levels and heights. Install new French oak flooring and joinery to unify the spaces.

WERE THERE ANY COMPROMISES? Heritage constraints meant contemporary changes couldn't be visible from the street. We also needed to work within the existing footprint and not intrude on the garden.

WHAT ARE YOU MOST HAPPY WITH? The ensuite, wardrobe and kitchen are definite highlights. We're really pleased with how we managed to draw in so much light and create a visual connection to the stunning garden.

DO YOU HAVE ANY WORDS OF WISDOM FOR WOULD-BE RENOVATORS? Carefully choose an architect who you have good rapport with and build a relationship of mutual trust.

HOW LONG DID THE RENOVATION TAKE? Design, approval and documentation took just over 18 months and construction was almost 12 months.

Design and building team Architect Sam Crawford Architects; samcrawfordarchitects.com.au. Builder Newmark Constructions; newmark.com.au.